

3794 Advance Kit Installation

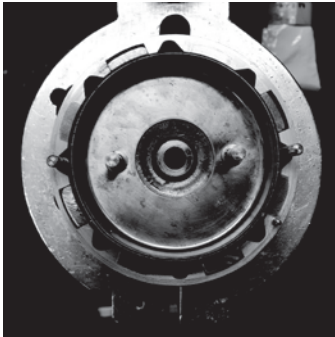


Fig. 1

1. Remove your existing base, then remove the existing fixed advance assembly out of the advance cup by removing the retaining e-clips (Fig.1). Give the two studs a wiggle to make sure they are being held solidly in place. If the studs are loose the magnet assembly must be removed and new studs put in place.



Fig. 2

2. Install the spring and washer into the split advance weights as shown in (Fig.2).

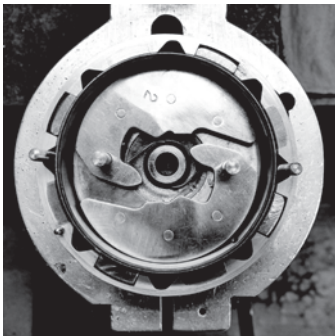


Fig. 3

3. Place the spring weights into the advance cup (Fig. 3).

Note: Direction shown is for clockwise rotation. If installing kit in a counterclockwise application advance weights must be flipped over so that they are facing the opposite direction. The return spring must also be bent so that it seats against the bottom of the advance cup.

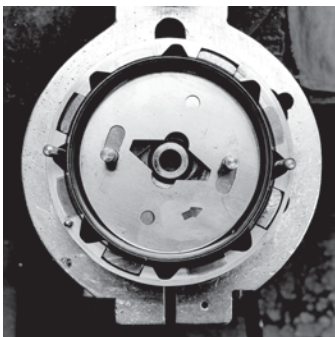


Fig. 4

4. After installing the spring weights (Fig. 3), place the limit plate over the studs with the arrow facing the direction as shown (Fig. 4).

Note: If installing into a counterclockwise application arrow must be pointing the opposite direction.

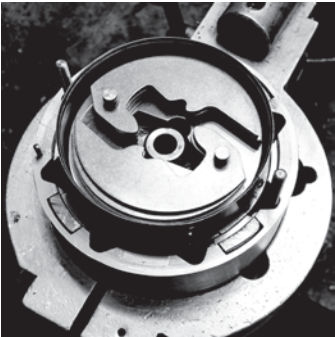


Fig. 5

5. Install three layers of weights. The first layer should comprise of the number 6 and 8 weight. The next layer should be the number 10 and 24 weights. The final layer should have two number 24 weights.

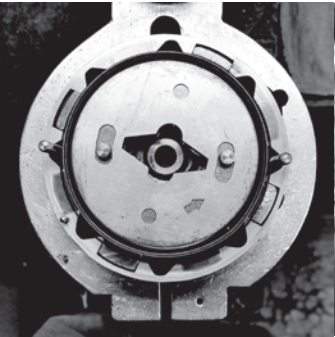


Fig. 6

6. Install the second limit plate making sure the arrow is facing the same direction as the first limit plate.

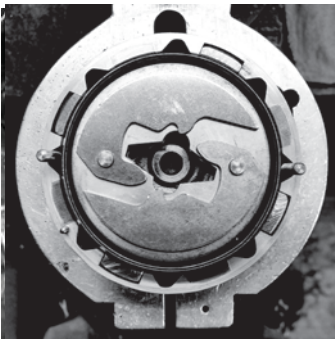


Fig. 7

7. Install the final layer consisting of two number 24 weights.

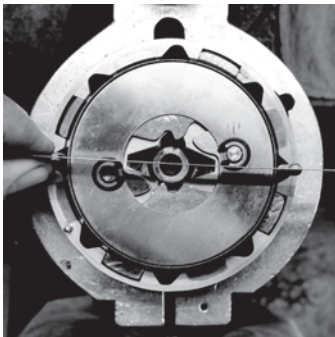


Fig. 8

8. Install the advance assembly end plate and reuse the e-clips that were removed in step one. Use a straight edge to align the limit plates with the base retention studs as show (Fig. 8). Align the drive on the base assembly with the stud holes in a similar fashion. Carefully install the base assembly onto the magneto making sure not to use force if binding is felt. This may take several attempts due to everything having to be lined up in such a particular way. Once the base is installed and seated firmly against the magneto housing install one set of retaining nuts and check the end play of the drive shaft to make sure there is no binding. There should be a minimum of .005" of end play. If there is insufficient end play, shims must be added, or subtracted to correct the situation. Finally install the remaining base nuts.